

RAW DATA

Analisis Karakter Gen LRGUK pada Penderita Diabetes Melitus Tipe II Di Sidoarjo

Species/Abbrev	
1. NC_060931.1	T T A T A C A T G C T A G G C A C A T A G T A G G C T C A G T T A A T A C T T G T T G A A T G A A T G A A G G A A C A G G G G A A G T A T A G T T T A G A G C A C T G T C A T G T G G G C A A G T C A C A T G T C T T C T C T G A G C A T T T T C T T A
2. AC018646.3	T T A T A C A A T G C T A G G C A C A T A G T A G G C T C A G T T A A T A C T T G T T G A A T G A A T G A A G G A A C A G G G G A A G T A T A G T T T A G A G C A C T G T C A T G T G G G C A A G T C A C A T G T C T T C T C T G A G C A T T T T C T T A
3. AC008154.6	T T A T A C A A T G C T A G G C A C A T A G T A G G C T C A G T T A A T A C T T G T T G A A T G A A T G A A G G A A C A G G G G A A G T A T A G T T T A G A G C A C T G T C A T G T G G G C A A G T C A C A T G T C T T C T C T G A G C A T T T T C T T A
4. NC_000007.14	T T A T A C A A T G C T A G G C A C A T A G T A G G C T C A G T T A A T A C T T G T T G A A T G A A T G A A G G A A C A G G G G A A G T A T A G T T T A G A G C A C T G T C A T G T G G G C A A G T C A C A T G T C T T C T C T G A G C A T T T T C T T A
5. SAMPLE_1	T T A T A C A A T G C T A G G C A C A T A G T A G G C T C A G T T A A T A C T T G T T G A A T G A A T G A A G G A A C A G G G G A A G T A T A G T T T A G A G C A C T G T C A T G T G G G C A A G T C A C A T G T C T T C T C T G A G C A T T T T C T T A
6. SAMPLE_2	T T A T A C A A T G C T A G G C A C A T A G T A G G C T C A G T T A A T A C T T G T T G A A T G A A T G A A G G A A C A G G G G A A G T A T A G T T T A G A G C A C T G T C A T G T G G G C A A G T C A C A T G T C T T C T C T G A G C A T T T T C T T A
7. SAMPLE_3	T T A T A C A A T G C T A G G C A C A T A G T A G G C T C A G T T A A T A C T T G T T G A A T G A A T G A A G G A A C A G G G G A A G T A T A G T T T A G A G C A C T G T C A T G T G G G C A A G T C A C A T G T C T T C T C T G A G C A T T T T C T T A
8. SAMPLE_4	T T A T A C A A T G C T A G G C A C A T A G T A G G C T C A G T T A A T A C T T G T T G A A T G A A T G A A G G A A C A G G G G A A G T A T A G T T T A G A G C A C T G T C A T G T G G G C A A G T C A C A T G T C T T C T C T G A G C A T T T T C T T A
9. SAMPLE_5	T T A T A C A A T G C T A G G C A C A T A G T A G G C T C A G T T A A T A C T T G T T G A A T G A A T G A A G G A A C A G G G G A A G T A T A G T T T A G A G C A C T G T C A T G T G G G C A A G T C A C A T G T C T T C T C T G A G C A T T T T C T T A
10. SAMPLE_6	T T A T A C A A T G C T A G G C A C A T A G T A G G C T C A G T T A A T A C T T G T T G A A T G A A T G A A G G A A C A G G G G A A G T A T A G T T T A G A G C A C T G T C A T G T G G G C A A G T C A C A T G T C T T C T C T G A G C A T T T T C T T A
11. SAMPLE_7	T T A T A C A A T G C T A G G C A C A T A G T A G G C T C A G T T A A T A C T T G T T G A A T G A A T G A A G G A A C A G G G G A A G T A T A G T T T A G A G C A C T G T C A T G T G G G C A A G T C A C A T G T C T T C T C T G A G C A T T T T C T T A
12. SAMPLE_8	T T A T A C A A T G C T A G G C A C A T A G T A G G C T C A G T T A A T A C T T G T T G A A T G A A T G A A G G A A C A G G G G A A G T A T A G T T T A G A G C A C T G T C A T G T G G G C A A G T C A C A T G T C T T C T C T G A G C A T T T T C T T A

Hasil potongan *alignment* gen LRGUK pada 687 bp dari basa nukleotida 197 bp hingga 324 bp

T T T T A T A C	A A T G C T A G G C A
A A A A T A T G	T T A C G A T C C G T
T T T T A T A C	A A T G C T A G G C A
A A A A T A T G	T T A C G A T C C G T
T T T T A T A C	A A T G C T A G G C A
A A A A T A T G	T T A C G A T C C G T
T T T T A T A C	A A T G C T A G G C A
A A A A T A T G	T T A C G A T C C G T

NC_06091331.1

AC018646.3

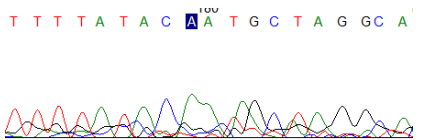
AC008154.6

NC_000007.14

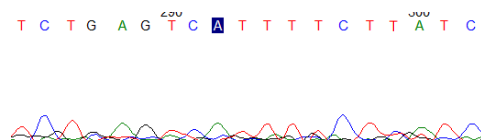
T C T G A G T C	A T T T T C T T A T C
A G A C T C A G	A A A A G A A T A G
T C T G A G T C	A T T T T C T T A T C
A G A C T C A G	A A A A G A A T A G
T C T G A G T C	A T T T T C T T A T C
A G A C T C A G	A A A A G A A T A G
T C T G A G T C	A T T T T C T T A T C
A G A C T C A G	A A A A G A A T A G

Urutan nukleotida ke 203 bp pada data *GenBank* LRGUK

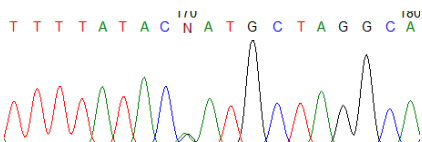
Urutan nukleotida ke 316 bp pada data *GenBank* LRGUK



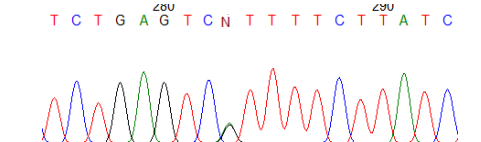
Urutan nukleotida ke 203 bp pada *Sample* 1



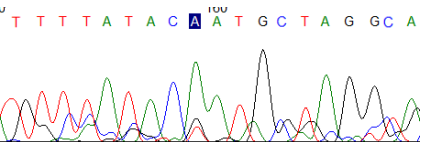
Urutan nukleotida ke 316 bp pada *Sample* 1



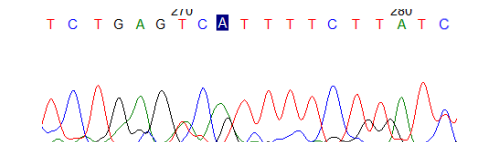
Urutan nukleotida ke 203 bp pada *Sample* 2



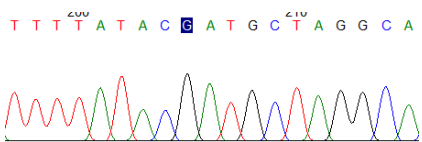
Urutan nukleotida ke 316 bp pada *Sample* 2



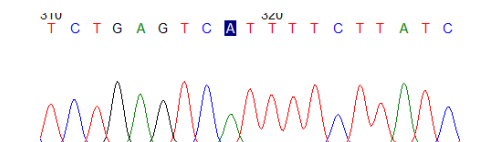
Urutan nukleotida ke 203 bp pada *Sample* 3



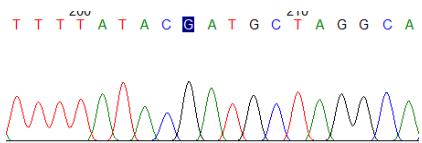
Urutan nukleotida ke 316 bp pada *Sample* 3



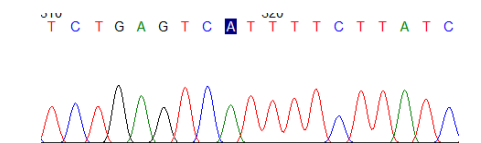
Urutan nukleotida ke 203 bp pada *Sample* 4



Urutan nukleotida ke 316 bp pada *Sample* 4



Urutan nukleotida ke 203 bp pada *Sample* 5



Urutan nukleotida ke 316 bp pada *Sample* 5

<p>T T T T A T A C C A T G C T A G G C A</p> <p>Urutan nukleotida ke 203 bp pada <i>Sample 6</i></p>	<p>T C T G A G T C A T T T T C T T A T C</p> <p>Urutan nukleotida ke 316 bp pada <i>Sample 6</i></p>
<p>T T T T A T A C C N A T G C T A G G C A</p> <p>Urutan nukleotida ke 203 bp pada <i>Sample 7</i></p>	<p>T C T G A G T C A T T T T C T T A T C</p> <p>Urutan nukleotida ke 316 bp pada <i>Sample 7</i></p>
<p>T T T T A T A C C A T G C T A G G C A</p> <p>Urutan nukleotida ke 203 bp pada <i>Sample 8</i></p>	<p>T C T G A G T C A T T T T C T T A T C</p> <p>Urutan nukleotida ke 316 bp pada <i>Sample 8</i></p>

